

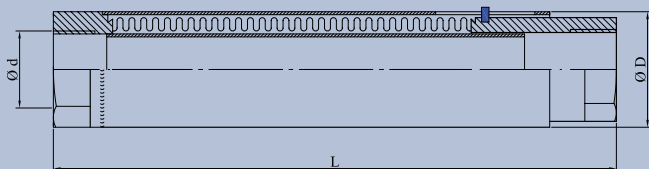
CENTRAL HEATING SYSTEM

Expansion Joints

This type of expansion joint is an excellent design for large displacements inside buildings. They have an outer cover for protection against external damage to bellows and for aesthetic looks. They also have an inner sleeve for a smooth medium flow internally.

Standard material of choice for bellows is 316/316L and balance of materials is carbon steel painted in white color. They are also available in all stainless steel form. They come with threaded connections up to DN65 and socket weld connections over DN65.

They can be axially pre-set for movements. Inner sleeve minimizes pressure loss and "whistling" due to flow. Installation is easy and quick. Typically one unit is sufficient for a 30 meter high building (about 10 story high residential building).



Applications

- » Central heating systems of buildings
- » Water pipe systems of large complexes such as shopping centers, hospitals, airports
- » Heating and ventilation systems

DESIGN VALUES

Bellows Material	304, 316, 321
Balance of Material	Carbon Steel, Stainless Steel
Design Pressure	16 barg
Design Temperature	400°C
Design Movement	Axial ± 25 mm

Nominal Diameter (DN)	DN15 (1/2")	DN20 (3/4")	DN25 (1")	DN32 (1 1/4")	DN40 (1 1/2")	DN50 (2")	DN65 (2 1/2")	DN80 (3")	DN100 (4")
Outside Diameter D (mm)	35	42	51	60	63	70	99	114	139
Length L (mm)	260	260	260	260	260	260	260	260	260

Above DN65, comes with "socket weld" connection.

Please consult with our technical department for different working conditions and design parameters.